

20, Adaptation: Industry

Welding pipe between storeys

Description, participants:

Manufacturing industry with two shift system. Short shutdown of three hours for welding and reconnection of steam pipe. You need to change a flange connection on a pipe that carries steam. You are working with an electrical welder. The pipe runs through the floor joists between three storeys. The image below is what you see when you look up towards the roof penetration. On the floor you're on, there is an oil cooler and a hydraulic pump.

Questions:

1. What form does your risk assessment take?
2. Is this hot work?
3. What risks and consequences do you see associated with this work?
4. What protective measures do you consider are necessary?
5. Can the work be done with the suggested tools, and if so how can it be done safely?
6. How do the permit manager and delegation work in this case?

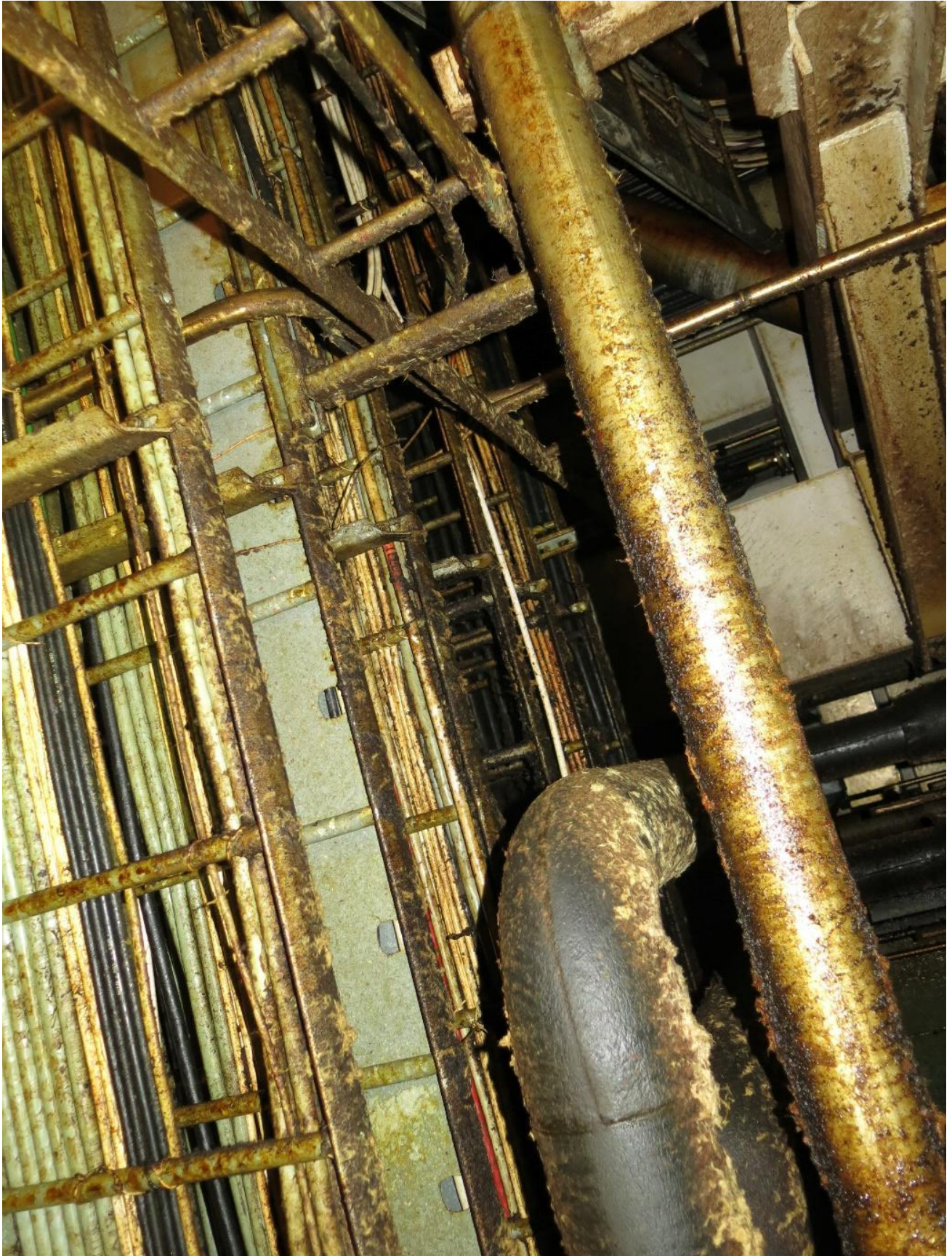




Image after the fire.